

Sufficiency not Growth

The Universe is a
communion of subjects
not a collection of objects

Ask the Beasts



“The natural world
is the primary revelation of the
divine”

Thomas Aquinas



“Wonder”

Integral Ecology - We are all One



Creation:

God's Book of Works



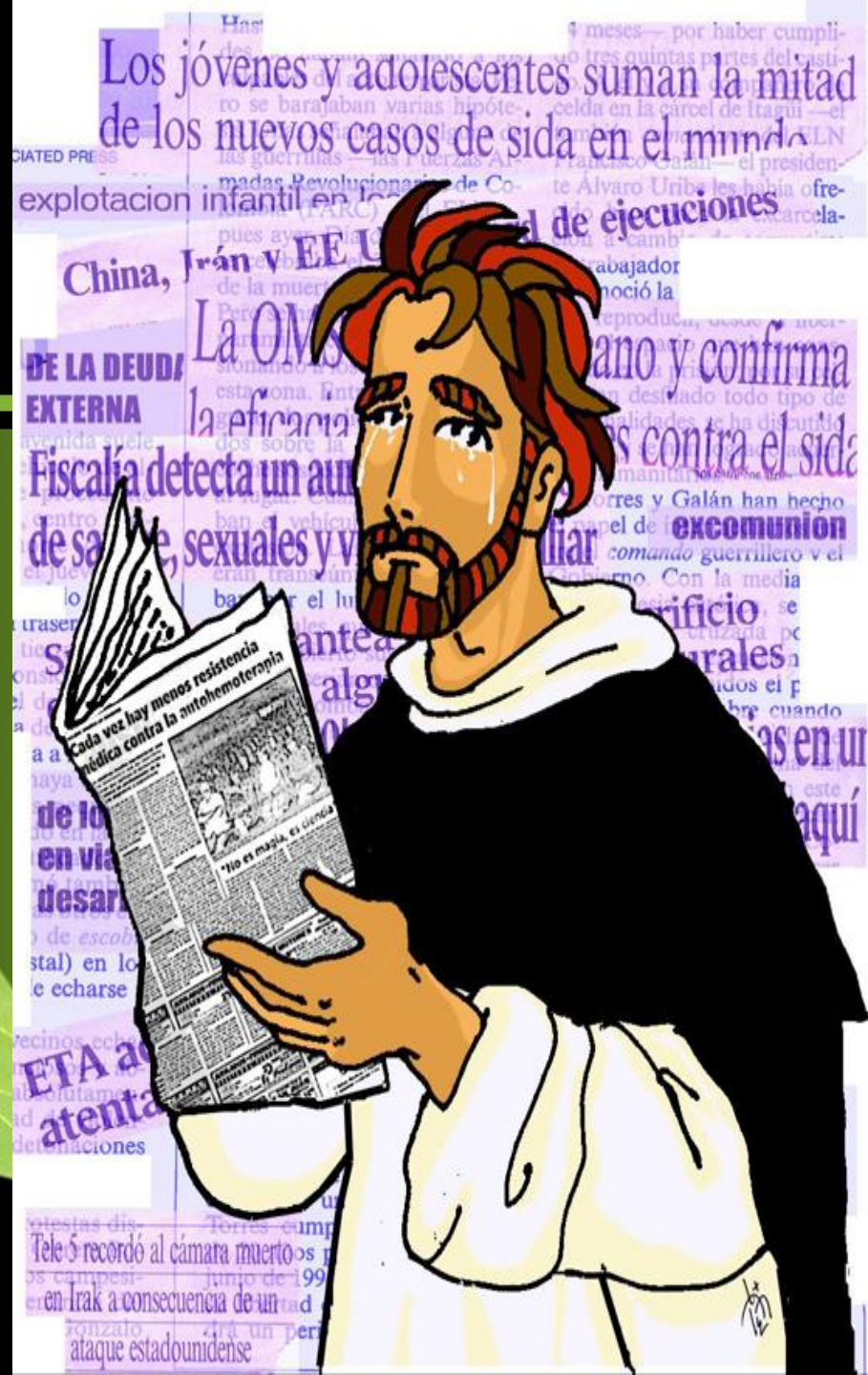
LAND IS SACRED, ADAMAH



Wasting of the Earth...

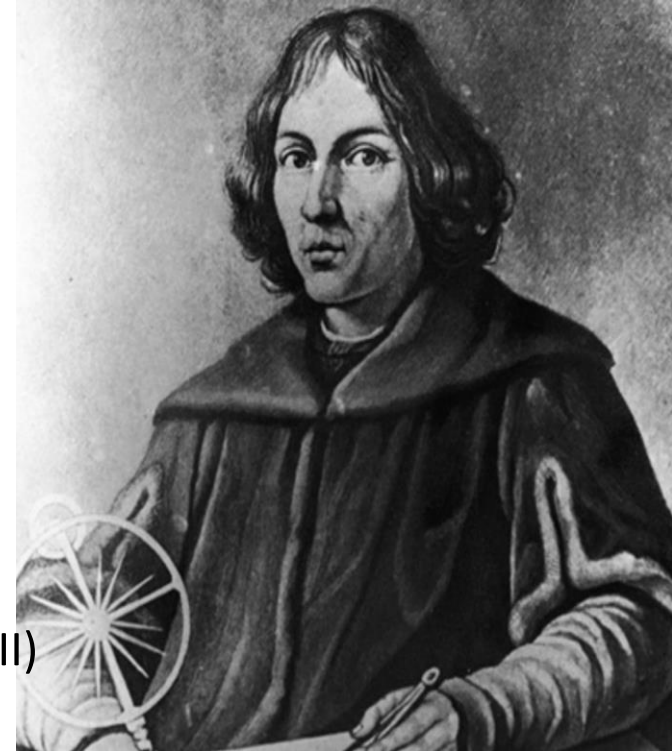
A planet in peril
at our hands

Distorted
Anthropocentrism



Biblical Cosmology Under Siege

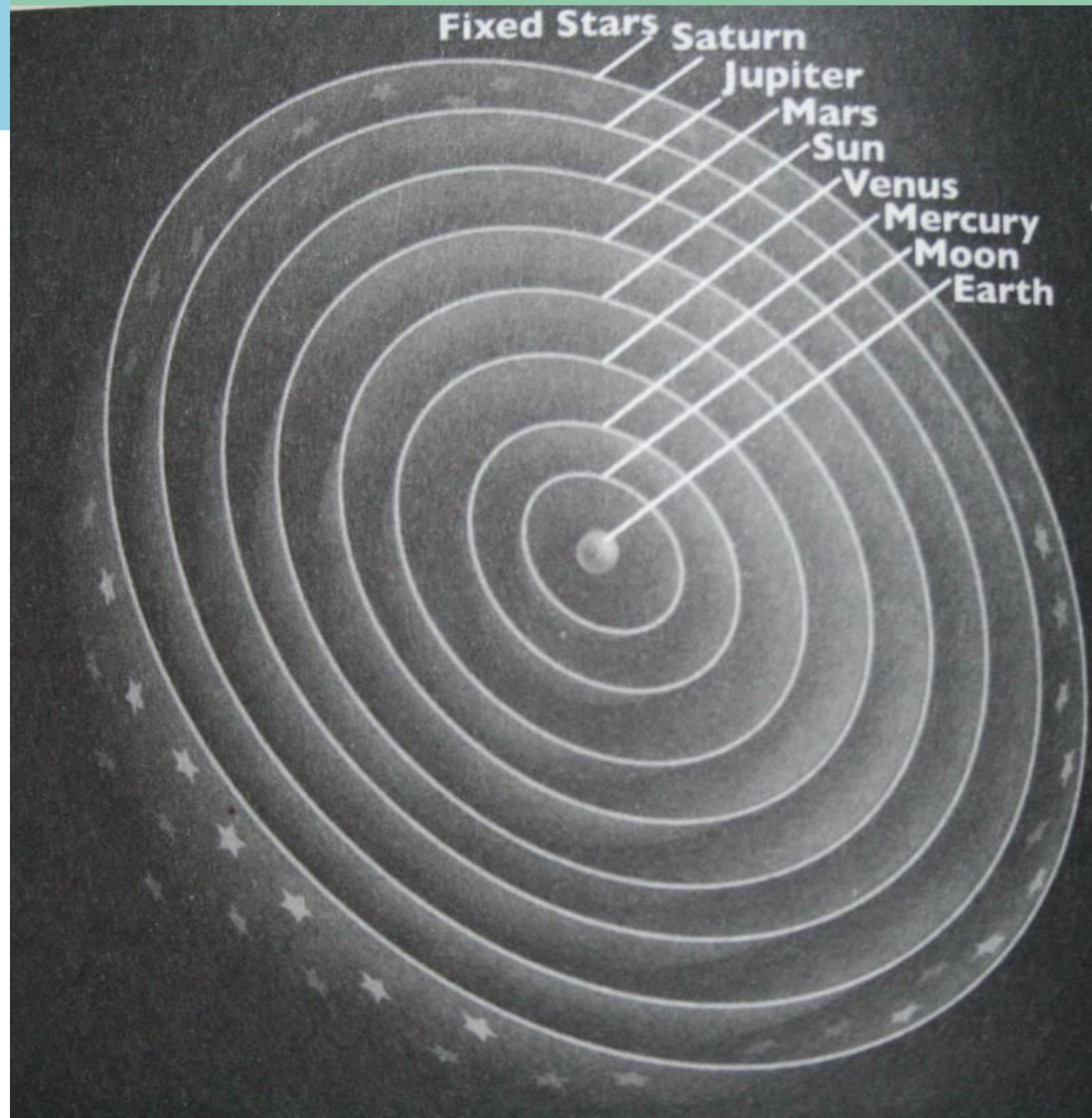
- Copernicus 1473 – 1543
De Revolutionibus (Pope Paul III)
- Kepler 1571 – 1630
Laws of Planetary Motion
- Galileo 1564 – 1642 (Pope Urban VIII)
Heliocentric Theory



Copernicus
“Upstart Astrologer”



Geocentric Earth

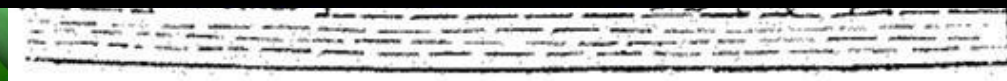
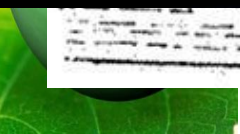


Ptolemy's Nested Spheres

The Great Chain of Being



- The chain was a series of hierarchical links with God at the top.
- Each level of the chain had its own hierarchy, with the king at the top of the human level.
- Disruptions in the chain could also disrupt the laws of nature and cause bizarre events to occur.



ROCKS

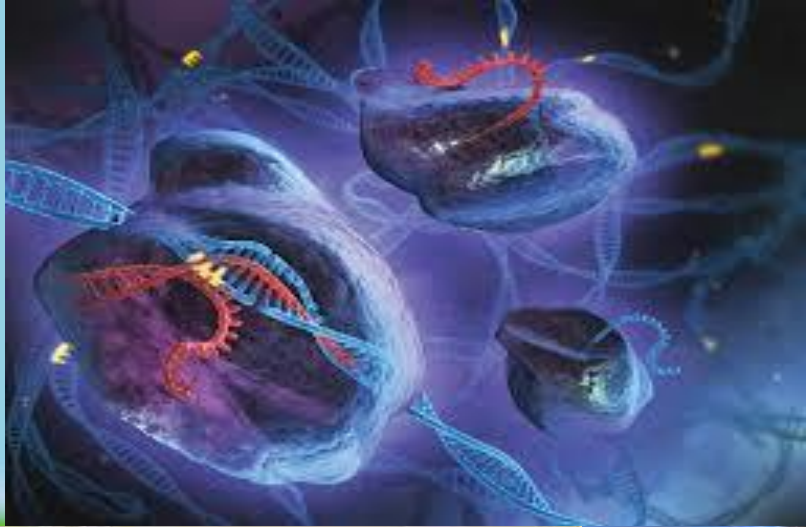


Neglect of the Cosmos

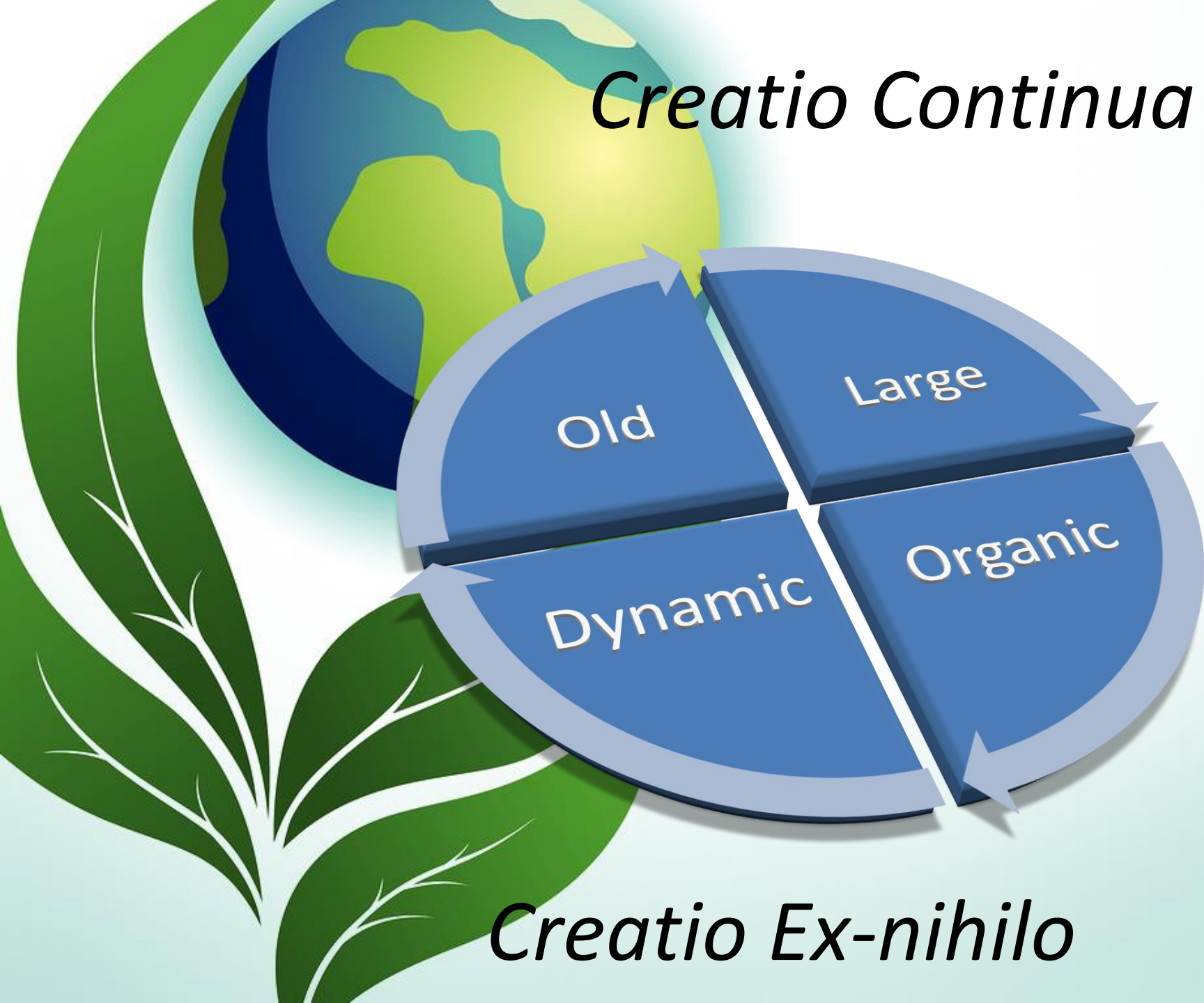
**Blocks Moral / Ethical
Integrity**



Wonder



Creatio Continua ...

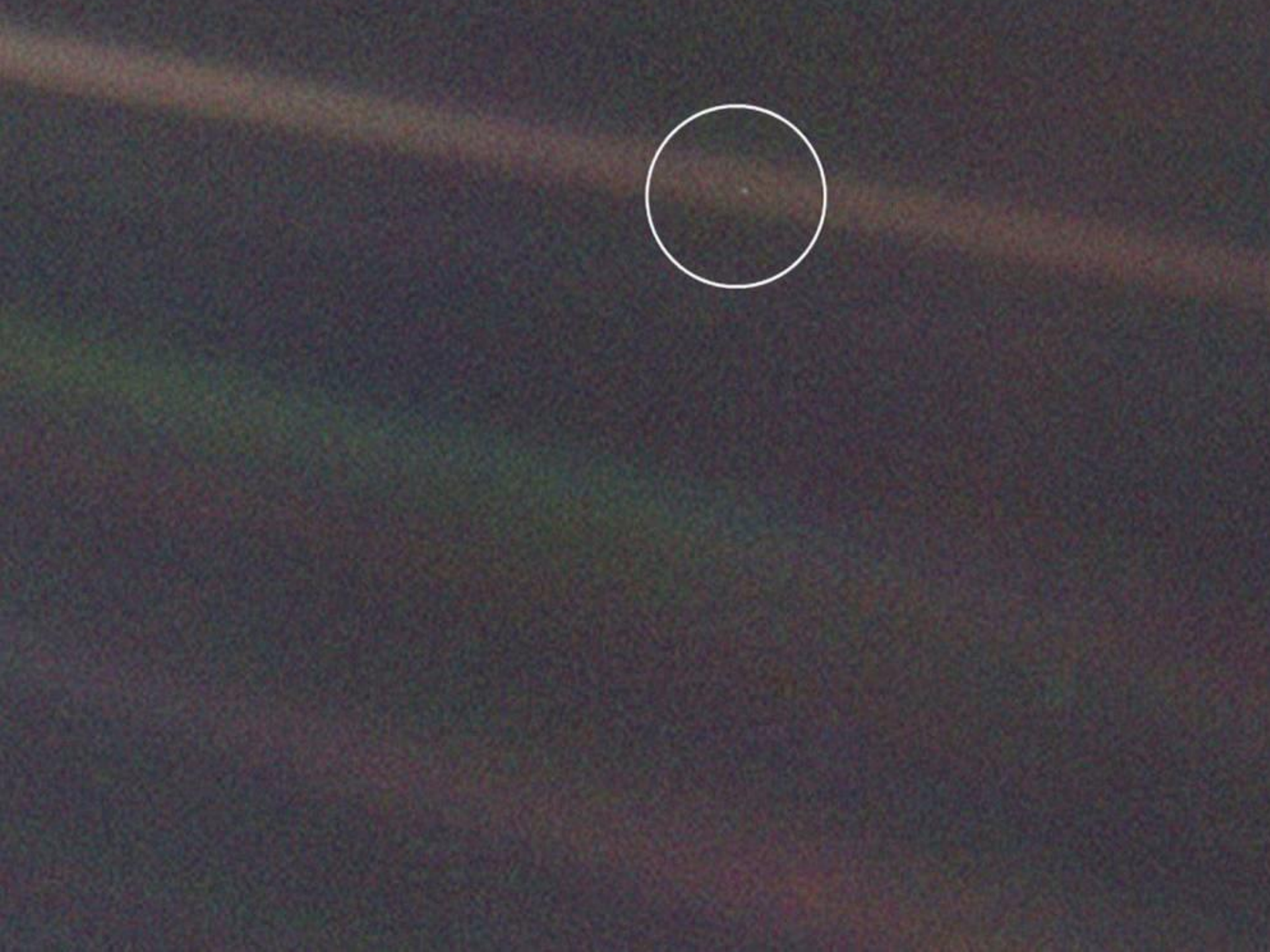


Creatio Ex-nihilo



You live here





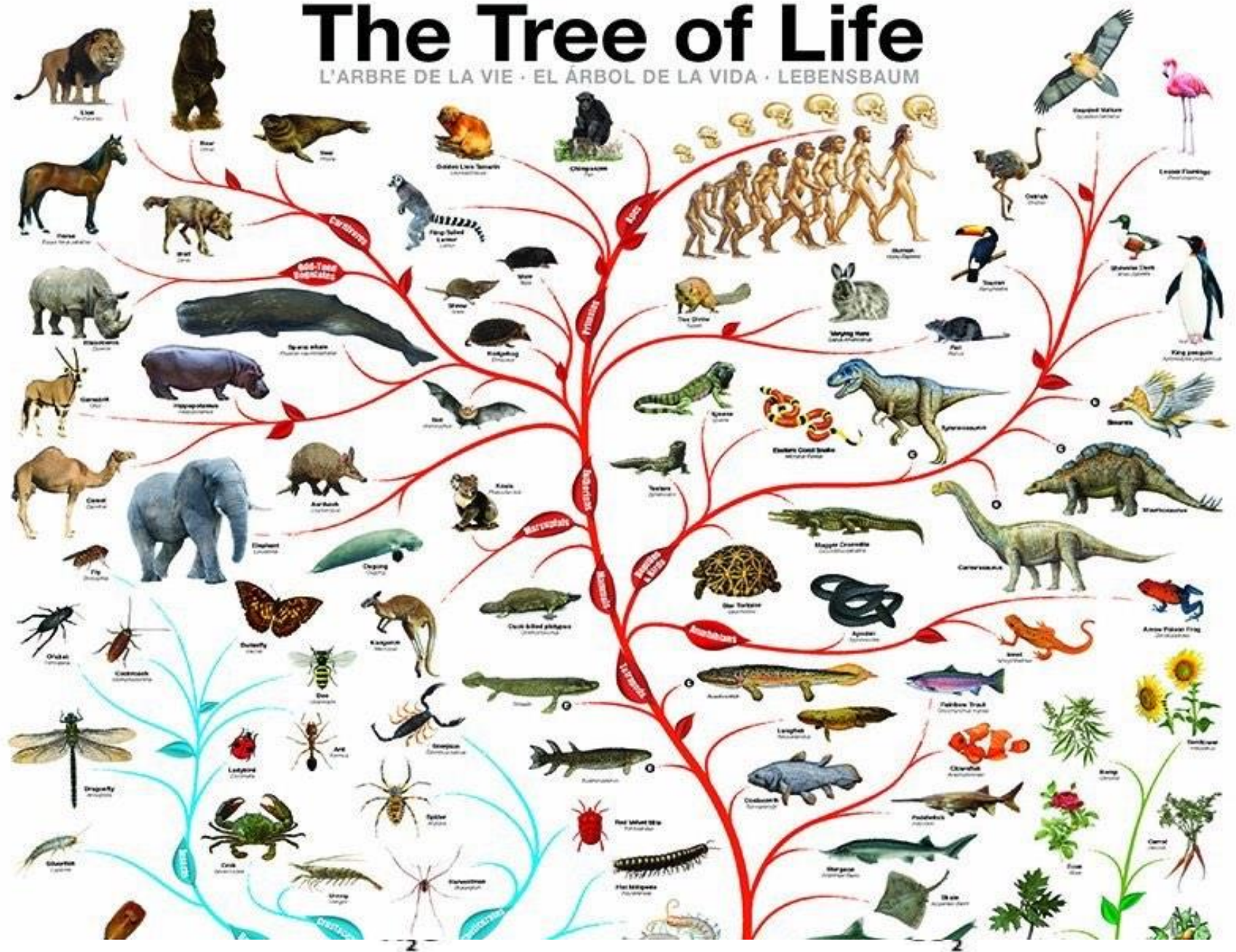


The First Humans
2.5 million years ago

Homo Habilis, Tool Maker, the first genus of the Homo appeared 2.5 million years ago. Then 150,000 years ago the species Homo Sapiens emerged, developing earliest language, pondering Earth and Cosmos in their range of beauty and harshness. Modern Humans descended from Homo Sapiens, shaped language, art, music and ritual to respond to the mysteries of life.



L'ARBRE DE LA VIE · EL ÁRBOL DE LA VIDA · LEBENSBAUM



Tree Of Life: genetic affinity

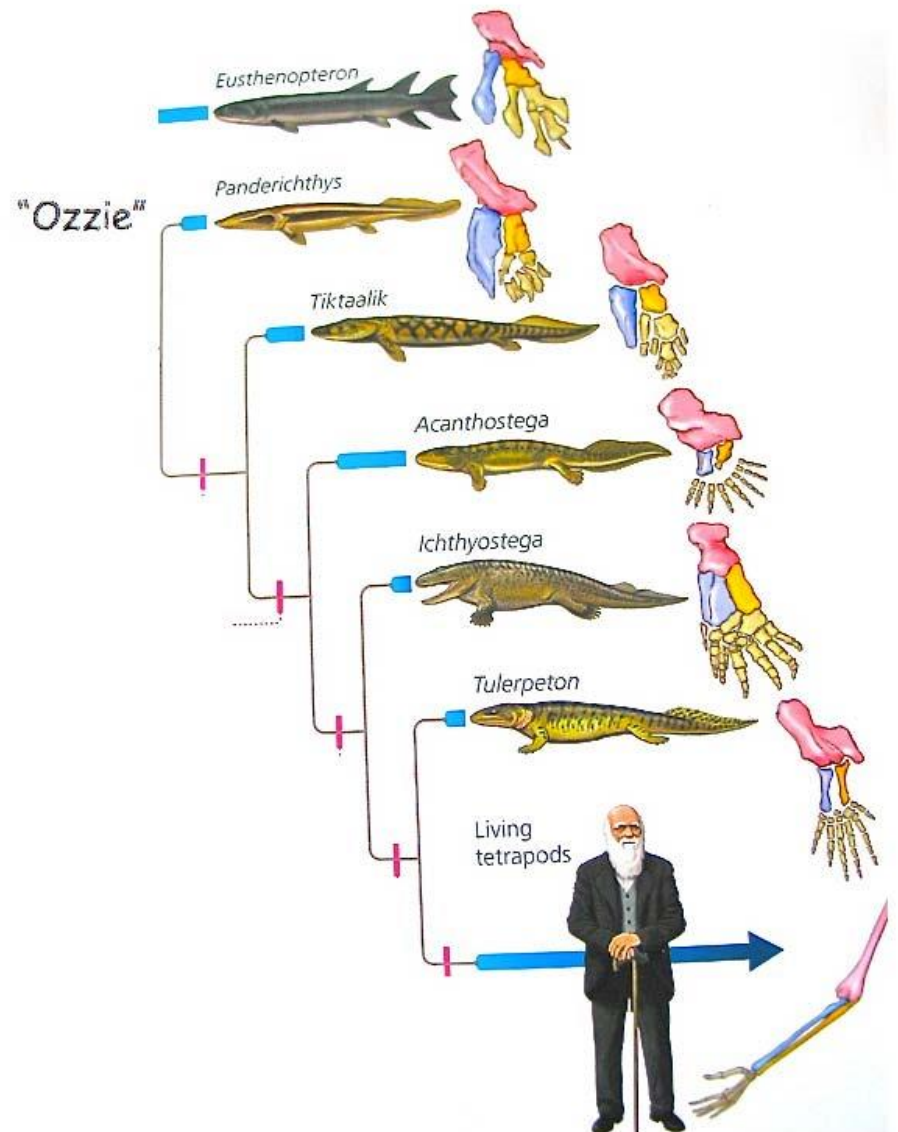
We are all brothers
and sisters ...



We share 40% of our
genes with the fruit fly.

We are only 1%
different from
chimpanzees!

Genetic Affinity –
We are all One – Fact!

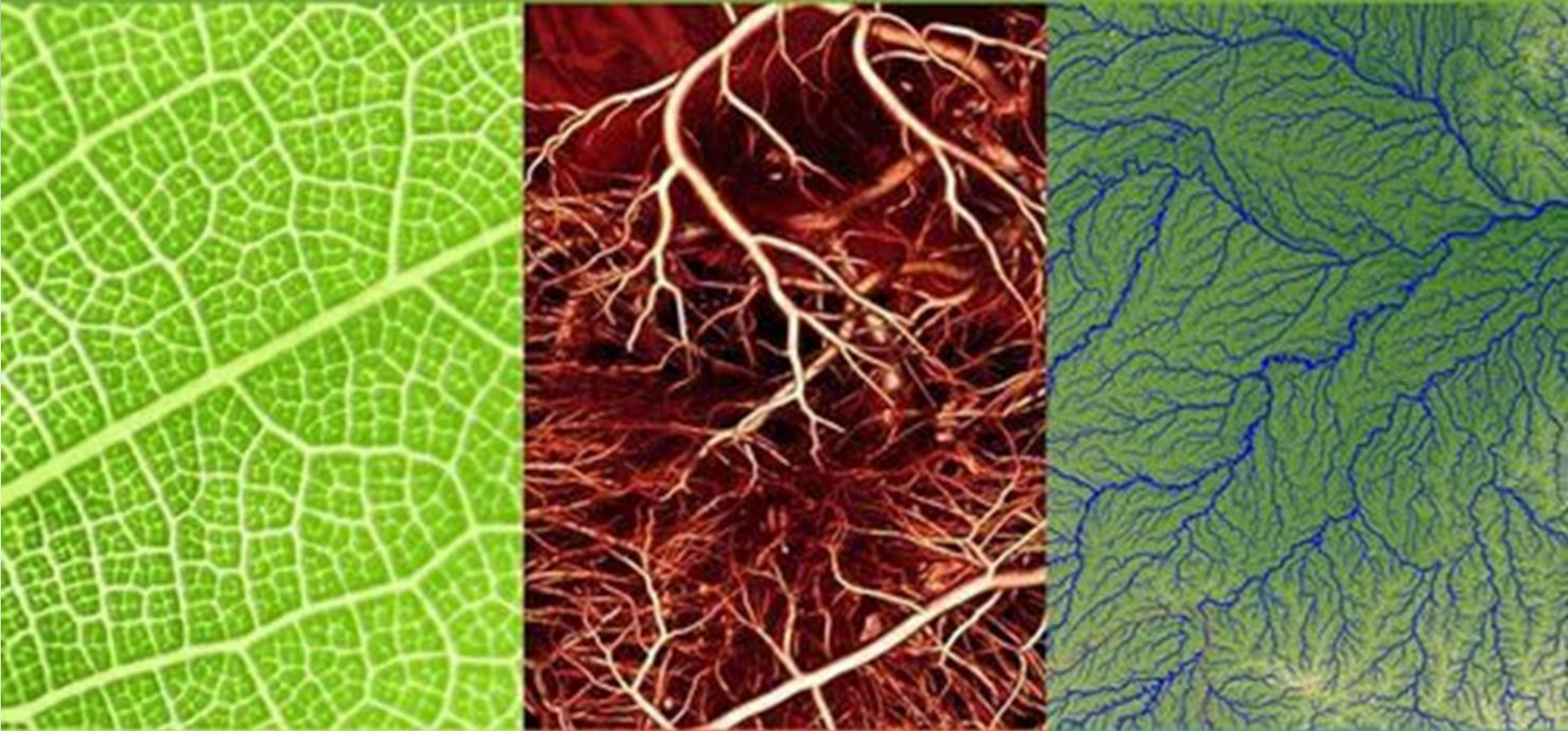


Intuits relationship at the deepest levels

Close up of a small
leaf

Blood vessels in human
heart

River network of
Amazon

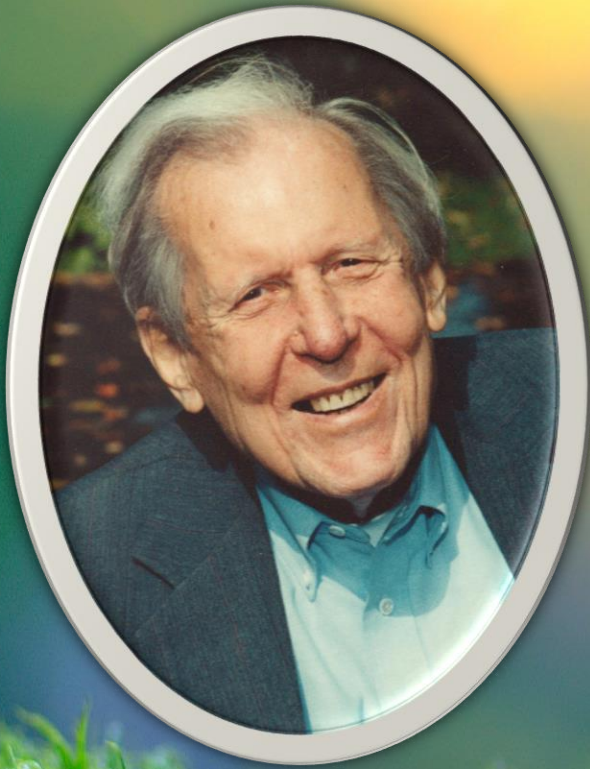


We Are Nature



*Questions arising...
New interpretations are needed*

Implications?



The Universe is a
communion of
subjects not a
collection of objects

Imaginal Cells



Contemporary Theology

to ponder on

Ecological Conversion

ALL ARE ONE

A new metaphor

THE TREE OF LIFE

Trinity

CREATIA CONTINUA

Eco justice

Principles

(LAND) ETHICS

WHOLE COMMUNITY OF LIFE



Living in right relationships

Love God, Love your Neighbour

Who is my Neighbour?

Can we stretch our notion of ethics to include the LAND?



It also entails a loving awareness that we
are not disconnected from the rest of
creatures, but joined in a
splendid universal communion.

220





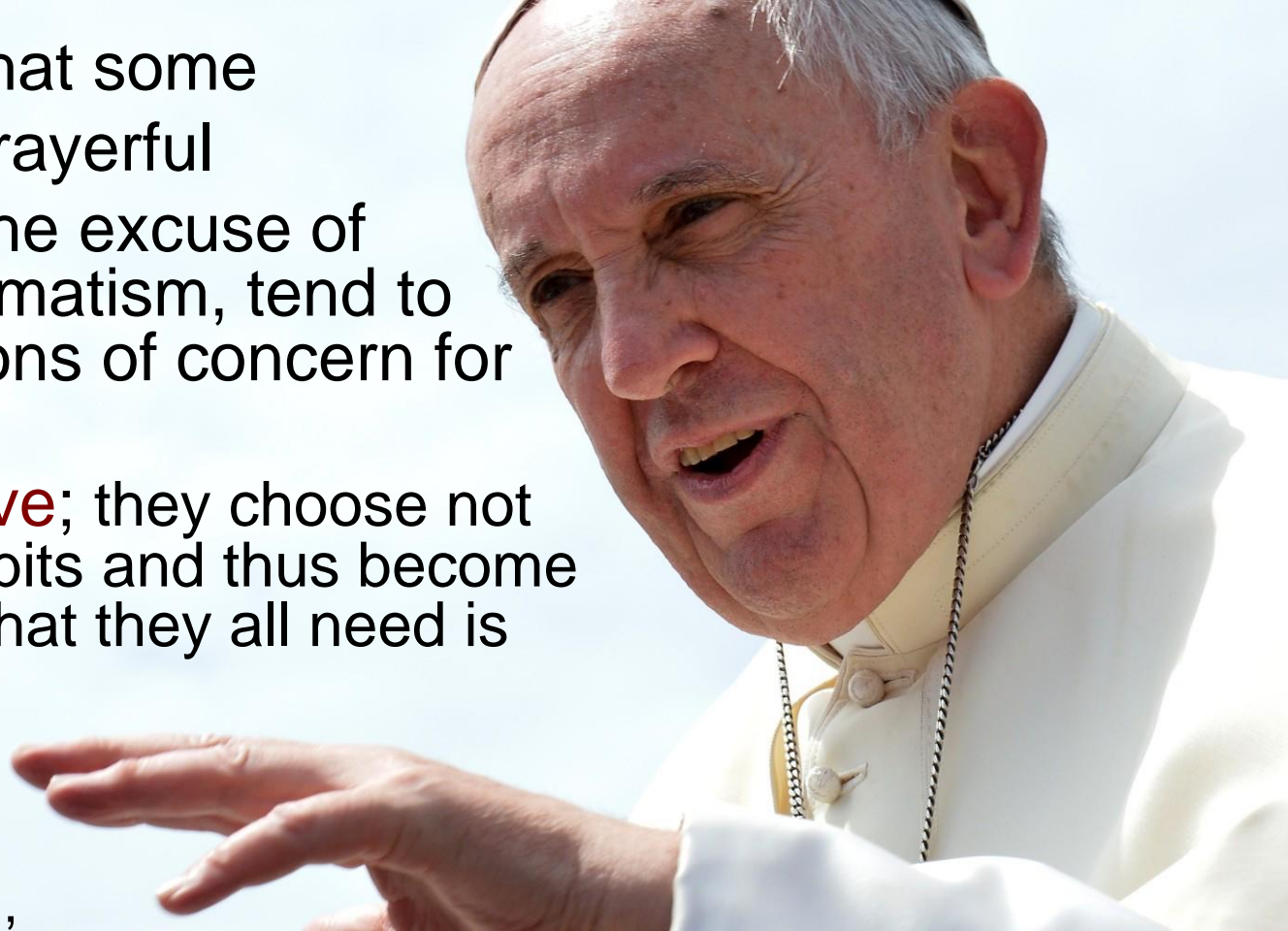
‘It must be said that some committed and prayerful Christians, with the excuse of realism and pragmatism, tend to **ridicule** expressions of concern for the environment.

Others are **passive**; they choose not to change their habits and thus become inconsistent. So what they all need is an

Ecological Conversion,

whereby the effects of their encounter with Jesus Christ become evident in their relationship with the world around them.’

#217



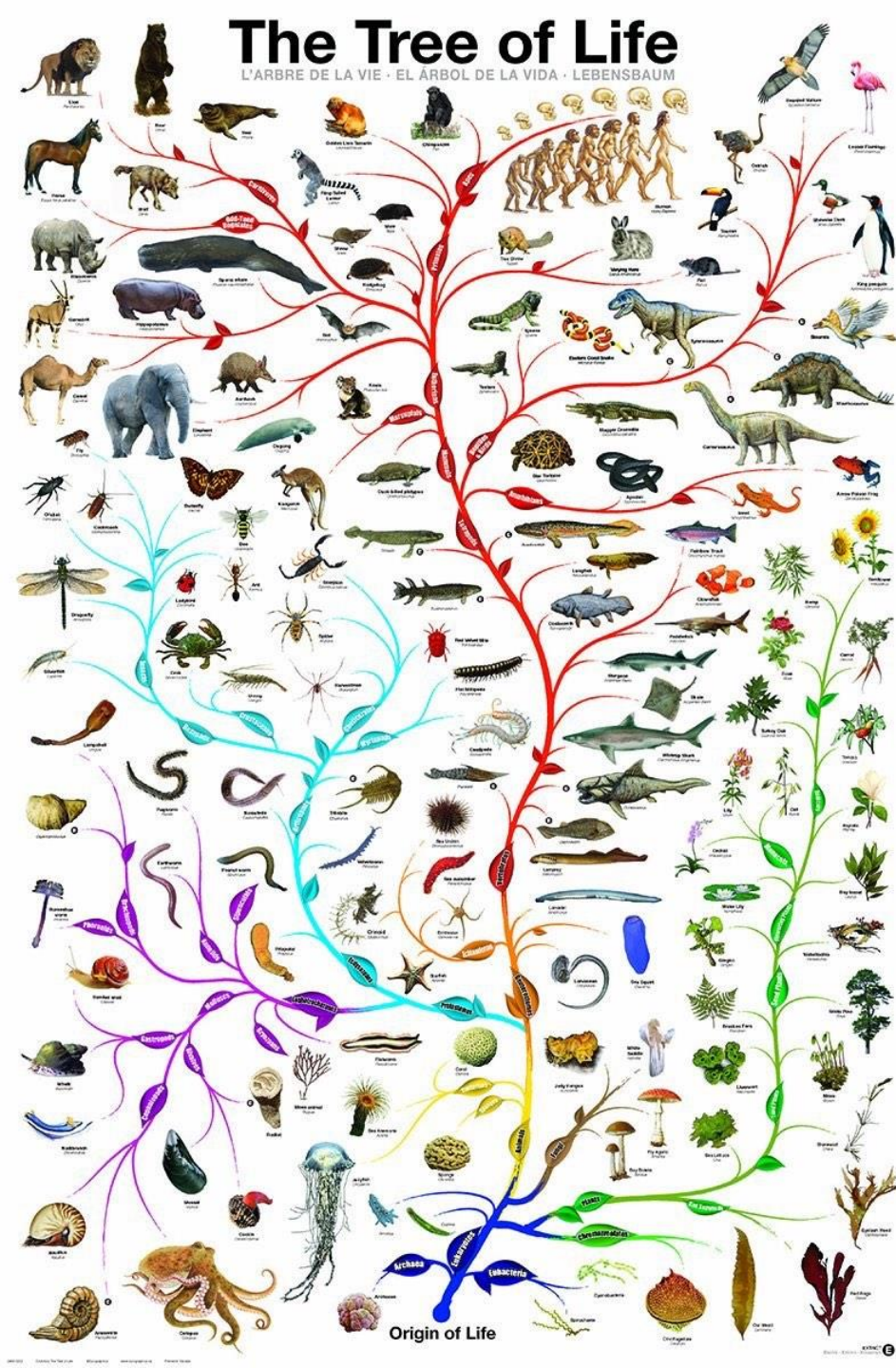
The Great Chain of Being



- The chain was a series of hierarchical links with God at the top.
- Each level of the chain had its own hierarchy, with the king at the top of the human level.
- Disruptions in the chain could also disrupt the laws of nature and cause bizarre events to occur.

The Tree of Life

L'ARBRE DE LA VIE · EL ÁRBOL DE LA VIDA · LEBENSBAUM



**A New Metaphor
- The Tree of Life**

(Job) Economic growth **X**

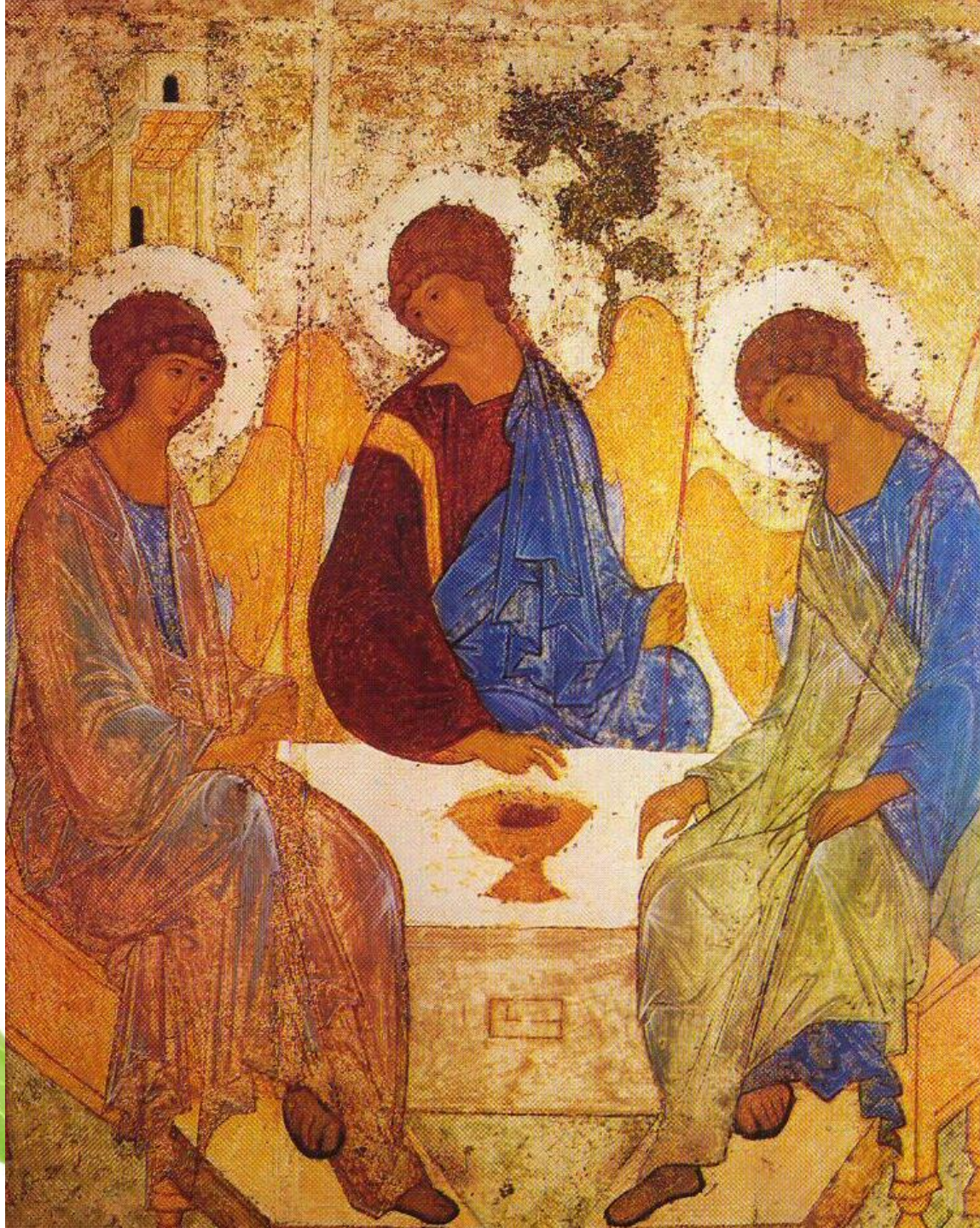


The Natural Environment places
finite limitations on our behaviour



“We will go into the future as a single
sacred community

or we will perish in the desert”



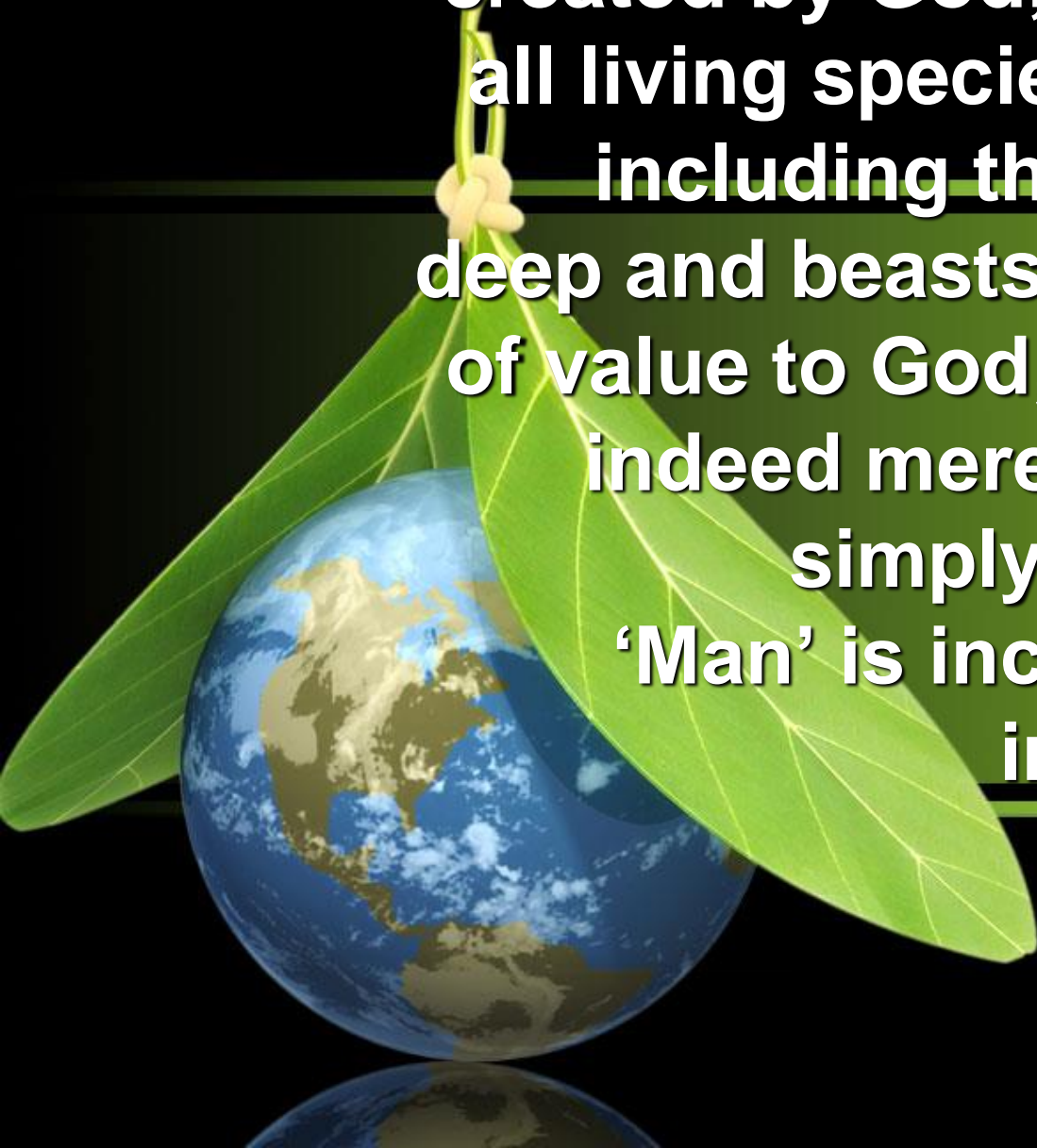
The Earth is
4.6 BILLION
years old.

Scaling to
46 YEARS
we've been here
4 HOURS
and our Industrial
Revolution began just
1 MINUTE ago...
...in that time we've
destroyed more than
50 PERCENT
of the world's forests.

**THIS IS NOT
SUSTAINABLE**



Job realises that all of creation is created by God, that God cares for all living species indiscriminately, including the 'monsters' of the deep and beasts of the land. All are of value to God, human beings are indeed merely 'a breath' (7:16), simply a part of creation.. 'Man' is incidental – mainly an impotent foil to God



**Wisdom helps us realise
that creation is not there
merely to serve human
interest
(Job 38-39)**

**Animals outside of human culture,
not as hostile forces but to be
celebrated for themselves**

